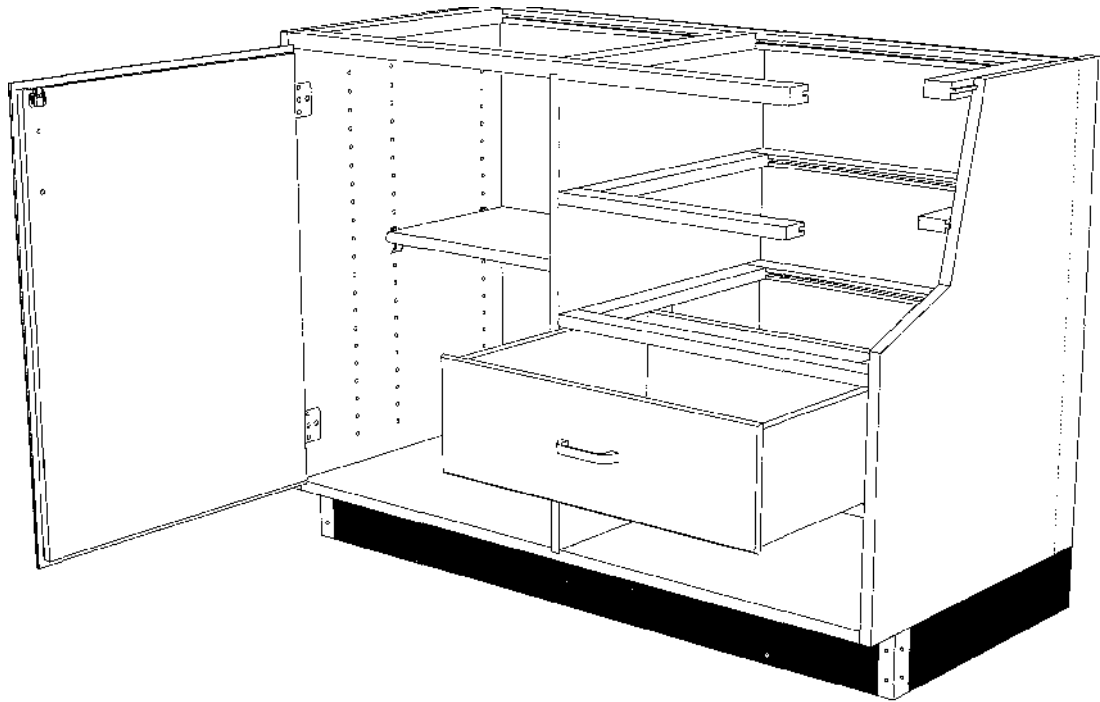

PETERSON CENTURY LINE Construction Combines As "Standard" All These Features...



1. Cabinets are constructed with exposed parts made of solid select red oak in combination with select plain sliced red oak veneers.
2. Cabinets feature full frame construction using solid hardwood top and intermediate frames and solid oak faced plywood bottoms. All cabinet frames and bottoms are blind mortise and tenoned into cabinet walls and/or partitions, providing the strongest construction available in the industry.
3. Cabinet walls and partitions are faced with solid oak. Cabinet hinges attach into solid hardwood lumber for maximum strength and durability.
4. Cabinet interiors are flush with no offsets for ease of cleaning and maximum drawer and cupboard space.
5. Drawer compartments are fully boxed in to prevent wandering of drawers in openings, thus eliminating the need for drawer guides or slides and further maximizing drawer volume and strength of drawer and reducing maintenance repair cost.
6. Cabinet drawers are made with solid oak drawer fronts and hardwood plywood drawer sides and backs.
Drawer bottoms are 1/4" thick tempered hardboard fully grooved into drawer fronts, sides and backs.
7. Cabinet doors are 5-ply solid core with nominal 1 3/4" solid hardwood bandings. Door faces are made of book matched, sliced red oak veneers.
8. Doors are secured to cabinets with institutional 5 knuckle stainless steel hinges. Doors have adjustable nylon roller catches to ensure easy, quiet and positive door closing. Doors and drawers are provided with exposed aluminum pulls resistant to chemical attack. Pulls are conditionally guaranteed against breakage or stripping of the fastening threads.
9. Shelves are made of hardwood plywood faced with solid oak and are adjustable on 1-1/4" centers without the use of tools.
10. Table aprons and table legs are made of solid oak lumber.
11. Cabinet exteriors receive stain as selected, and all cabinet exteriors, cupboard interiors and drawer interiors receive triple pass coat of conversion sealer and varnish for optimum chemical resistance.

NOTE: Leonard Peterson & Co., Inc. also offers their Vanguard Construction Lines, which use 100 pound epoxy coated slides on all drawers. This construction replaces intermediate frames between drawers or drawers and cupboards with intermediate face rails. When Vanguard construction is furnished, drawer heights are 3/8" less, lengths are 1" less and depths (front to back) are 1-1/2" greater than measurements listed throughout this catalog. Cupboard interiors remain unchanged. Contact dealer or manufacturer for complete specifications.

...And More! These features are no longer provided by other manufacturers.

Contact your local dealer for full specifications.

Century Line is covered by a fifteen (15) year manufacturer's warranty.

PETERSON MEANS QUALITY